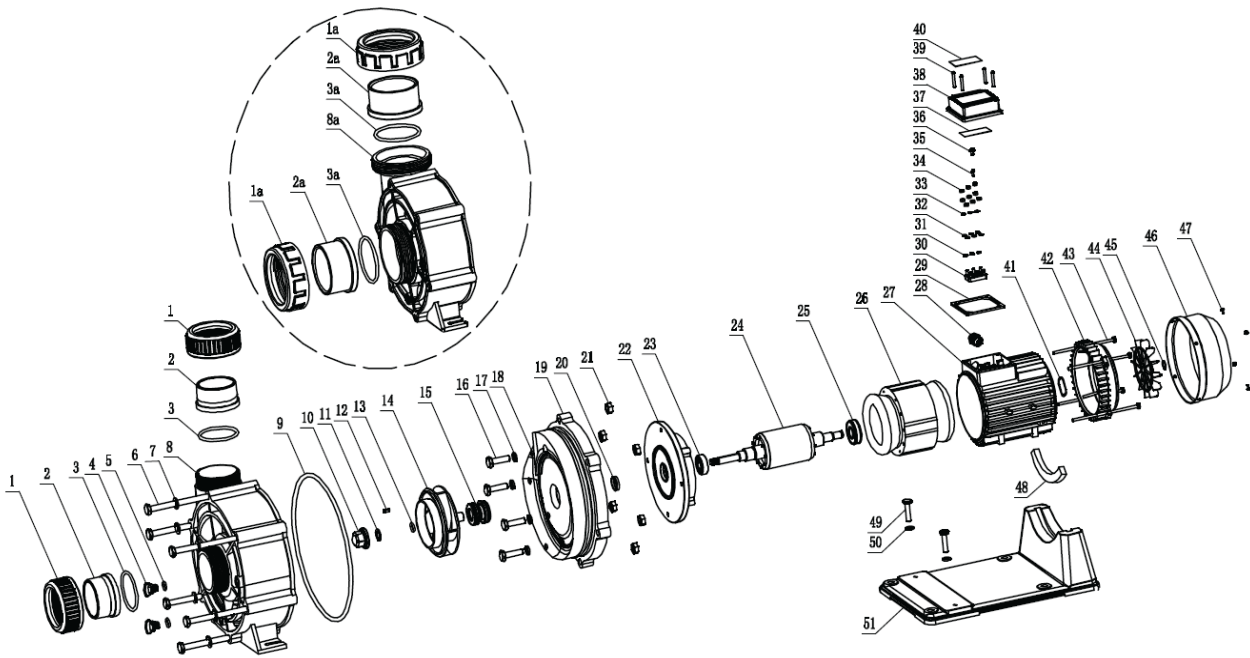


## QRC / QRCC / CCU SERIES PUMP SPARES



SI No	Description	Specification	Material
1	Tie-in Nut	G2¾"	PVC
1a	Tie-in Nut	3"	PVC
2	Tie-in	Ø60.3/Ø63	PVC
2a	Tie-in	Ø75/Ø90	PVC
3	O-Ring	d62x4.5	NBR
3a	O-Ring	d94x5.7	NBR
4	Drainage Plug		PA66 - GF
5	O-Ring	d11.2x2.4	NBR
6	Hexagon Bolt	M10 x 130	SS304
7	Washer	Ø 10	SS304
8	Pump Casing	G2¾"	PP - GF30
8a	Pump Casing	G4½"	PP - GF30
9	O-Ring	d208x6	NBR
10	Impeller Nut	M12	H59
11	Spring Pad	d12	SS304
12	O-Ring	A4x12	SS304
13	O-Ring	D25 x2.4	NBR
14	Impeller		PA66-GF30
15	Mechanical Seal	SB-20/LV2PF	CARBON / CERAMIC/NBR
16	Hexagon bolt	M8x 35	SS304
17	Seal Gasket		PA6
18	O-Ring	d6x2	NBR
19	Pump Cover		PP'-GF30
20	Seal Gasket	d20	NBR
21	TYPE 1 Hexagonal Nut	M10	SS304

## QRC / QRCC / CCU SERIES PUMP SPARES

SI No	Description	Specification	Material
22	Front Cover		ADC12
23	Bearing	6205	
24	Rotor Assembling		
25	Bearing	AC6204	
26	Stator Assembly		
27	Engine base		ADC12
28	Cable Head	M18 x1.5	Flame resistant PA6
29	Terminal Box Pad		NBR
30	Connection Pole		Melamine+A3
31	Serrated Lock Washer External Teeth	Ø 4	A3
32	Connection Strip		H62
33	Washer	Ø 4	A3
34	Type 1 Hexagonal Nut	M4	A3
35	Cross Recessed Pan Head Tapping Screw	M4x 12	A3
36	Cross Recessed Pan Screw ,Spring Washer,Plain Washer Assemblies	M5x 12	SS304
37	Wiring Diagram		Sticker
38	Terminal box		Flame Resistant ABS
39	Cross Recessed Pan Head Screw	M4 x30	SS304
40	Name Plate		Sticker
41	Drainage Plug	D47	65Mn
42	Back Cover		HT200
43	Hexgonal Bolt	M5 x180	A3
44	Fan		PP
45	Shaft spring pad	d14	65Mn
46	Fan Cover		ABS+PC
47	Cross Recessed Pan head Screw and Washer Assemblies	M4x8	SS304
48	Block Gine		NBR
49	Hexgonal Bolt	M8x 16	SS304
50	Washer	Ø 8	SS304
51	Bracket		PA6+GF30

## PREFILTER SPARES

SI No	Description
1	Transparent lid
2	Union Nut
3	Adaptor
4	Nob
5	O ring for transparent lid
6	O ring for Adaptor