

**P LINE**

**P500 / P600**

**EN** Operating instructions

**FR** Mise en marche de votre robot nettoyeur de piscine

**DE** Bedienungsanleitung für den automatischen Bodensauger

**IT** Manuale di istruzioni

**ES** Funcionamiento del robot limpiador de piscina



## Introduction

### System overview

The robotic cleaner sweeps the pool floor and walls collecting dirt and debris in its internal filters. This user manual explains how to operate the robotic cleaner, including cleaning, maintenance and storage procedures. **Note:** This manual reviews several different models with variations.

### Robotic cleaner operation

After the robotic cleaner is placed in the pool and activated, it operates according to its program. It moves along the floor and walls of the pool, covering the entire area of the pool. When it has finished its program, it remains inactive on the pool floor. Power will automatically shut off. **Note:** It's not recommended to stop the pool cleaner prior cycle end.

**Note:** Wall climbing is an optional feature. When the wall climbing feature is enabled, the robotic cleaner climbs the wall at intervals according to its internal program. Its ability to climb over stairs in swimming pool is subject to stair geometry and material.

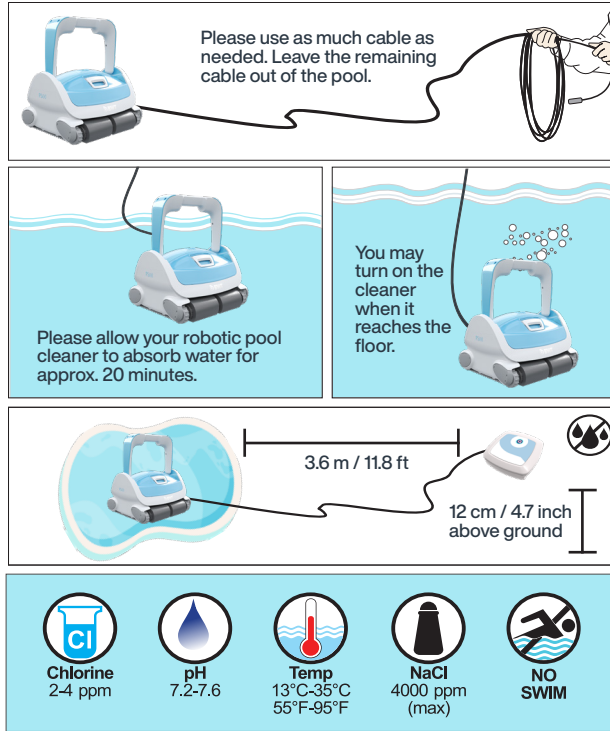
### Operating conditions

The robotic cleaner is intended for use in residential swimming pools only in the following conditions: (1) Recommended water temperature 22°C-32°C (72°F-90°F). (2) Water pH: 7.2 - 7.6 (3) Chlorine level: pool is maintained according to the pool manufacturer's instructions. (Recommended Chlorine level: 2-4 ppm) **Note:** Failure to maintain the pool according to the recommended operating conditions could prevent the robotic cleaner from functioning properly.

## Components



## Operation



### Placement the Power Supply

(1) Place the power supply at least 3.6 meters / 11.8 feet from the pool and at least 3.6 meters / 11.8 feet above the surface. **CAUTION: The power supply is not water resistant; it must not be exposed to water or to direct sunlight.**

(2) Press the plastic snap on the zip ties in order to release the floating cable, use as much cable as needed into the water.

### Before placing the cleaner unit in the water

(1) Make sure there are no people in the pool. (2) Make sure that the filters are clean. (3) Make sure the pool conditions are met; (see "Operating Conditions" ).

### Placing cleaner in the water

(1) Unroll the floating cable. It is recommended to extend a length of cable that is equal to the pool diagonal size plus an additional two meters. Smooth out coils or twists in the cable. Roll extra cable outside the pool near the power and control unit. (2) Place the cleaner unit in the pool. (3) Let it sink to the bottom of the pool. Do not start operation before the robotic cleaner is settled on the pool floor. (4) Connect the floating cable to the socket located on the power and control unit.

**CAUTION: Operating the cleaner out of water causes immediate severe damage and results in loss of warranty.**

## Operation

### Starting the Robotic Cleaner

Connect the power supply to the wall socket. The on/off button is lit and the robotic cleaner starts its cleaning program. If the power and control unit is already connected to the AC socket, the on/off button flashes to indicate that the robotic cleaner is in standby mode. Press the Operation button. The on/off button turns on and the robotic cleaner starts the cleaning program. **Note:** When the Full Filter Indicator light on (optional in some models.) the filters must be cleaned before replacing the unit in the pool.

### Cleaning Cycle

During the cleaning cycle, the cleaner: (1) moves across the pool floor picking up dirt and debris. (2) Changes direction and rotates automatically according to the selected program. (3) Climbs the pool walls every few minutes, as set in its internal program.

**Note:** The robotic cleaner might occasionally stop moving for a few seconds. This is part of normal operation, not a malfunction.

### Stopping robotic cleaner operation

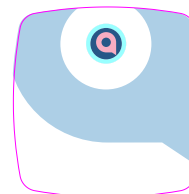
The robotic cleaner moves automatically to 'standby' after every cleaning cycle and the on/off button starts flashing. To stop the cleaner operation during a cleaning cycle, press the operation button once. The on/off button starts flashing and the cleaner is in standby mode.

### Pulling cleaner unit out of the water

(1) Unplug the floating cable from the power supply. (2) Pull the floating cable until the unit is close enough to reach the handle. (3) Using the handle, lift the cleaner out of the pool.

**CAUTION:** Do not use the floating cable to lift the cleaner unit out of the water.

## Power Supply






 On/Off



 On/Off  
 Full filter indicator

 Long press for short cycle



 On/Off  
 Full filter indicator  
 Bluetooth



### Cleaning the filters

The two filters must be cleaned after each cleaning cycle. (1) Release the filter and pull it out of the cleaner unit. (2) Open the filter case. (3) Spray water on the outer sides of the filter and then spray water towards the inner side of the filter to clean all the dirt and debris. (4) Reinsert the filter back into its location until a click is heard to secure the filter in place.

### Storing the robotic cleaner

Follow these instructions to store the robotic cleaner when not in use: (1) Disconnect the power cord from the wall outlet. (2) Disconnect the floating cable from the power supply. (3) Spread out the floating cable, and roll it. (4) Wash the cleaner unit interior space with fresh water and let it dry. (5) Roll the floating cable and place it on the cleaner unit. **Caution:** Do not roll the floating cable on the handle of the cleaner unit. (6) Store the robotic cleaner components in a dry, closed location. (7) Verify that the supply is not exposed to water.

### Checking water outlet propeller

It is recommended to periodically clean debris and hair from the propeller of the water outlet: (1) Remove the filters (2) Remove the screws that holds the water outlet cover. (3) Remove the water outlet cover (4) Clean any hairs, dirt, or debris. (5) Return the cover and fasten it with the screws (6) Reinsert the filters.

## Troubleshooting

### Cleaner does not turn on

**There is no electricity in the wall socket:** (1) Disconnect cleaner from the power and control unit. (2) Disconnect power supply from the wall socket, wait 30 seconds and reconnect. (3) Turn power on. If not activated, connect the unit to a different wall socket.

**Obstacle in the drive system of the cleaner unit:** (1) Turn the cleaner unit carefully to view the underside. (2) Check that the scrubbing brush is not bent/broken. (3) Clean and remove obstacles and debris if necessary.

**Propeller is seized due to accumulation of hair:** Check if the propeller is broken or needs to be cleaned (see "Checking Water Outlet Propeller").

### CLEANER MOVES BUT DOES NOT PUMP WATER

Filters are dirty: (1) Remove the filters (2) Run the robotic cleaner in the pool without the filters. If working properly, clean the filters well or replace the filters.

**Propeller is broken or seized due to accumulation of hair:** Check if the propeller is broken or needs cleaning (see "Checking Water Outlet Propeller").

### CLEANER PUMPS WATER BUT DOES NOT MOVE

**Obstacle in the drive system of the cleaner unit:** (1) Turn the cleaner unit carefully to view the underside. (2) Check that the scrubbing brush is not bent/broken. (3) Clean and remove obstacles and debris if necessary.

### CLEANER STARTS AND SHUTS OFF AFTER A SHORT TIME

**Filters are dirty:** (1) Remove the filters. (2) Run the robotic cleaner without the filters. If working properly, clean the filters well or replace the filters.

**Propeller is broken or seized due to accumulation of hair:** (1) Remove the top screws on the top outlet. (2) Check if the propeller is broken or needs to be cleaned.

**Obstacle in the drive system of the cleaner unit:** (1) Turn the cleaner unit carefully to view the underside. (2) Check that the scrubbing brush is not bent/broken. (3) Clean and remove obstacles and debris if necessary.

### CLEANER DOES NOT PICK UP DIRT

Filters are dirty or have holes.  
Clean as needed and verify that there are no holes in the filters.  
Propeller is broken or seized due to accumulation of hair.  
Check if the propeller is broken or needs cleaning (see "Checking Water Outlet Propeller").  
The suction inlet is not close enough to the pool floor.  
Move the suction inlet OUT (see "Adjusting Suction Height").

### CLEANER UNIT DOES NOT COVER THE ENTIRE POOL

Clean the filters.  
1. Verify that there is enough length of the floating cable in the water to reach the far end of the pool.  
2. Make sure that the floating cable is properly spread out and is not tangled.

Propeller is broken or seized due to accumulation of hair: (1) Remove the top screws on the top outlet. (2) Check if the propeller is broken or needs cleaning.

### THE CLEANER DOES NOT CLIMB WALLS

(1) Verify that your robotic cleaner is not a floor-only model. (2) Verify that Program 1, floor cleaning only, is not selected on the power supply unit (see "Robotic Cleaner Programming" in the bluetooth manual). (3) Make sure to clean the filters (4) Make sure propeller isn't broken or tied up to debris/hair.



### Warning

Do not stay in the pool and remove any and all items from the pool before operating the robotic pool cleaner. Do not leave the robot inside the pool if unused.

The power supply must be connected through a Ground Fault Current Interrupter (GFCI USA) or a Residual Current Device (RCD Europe) not exceeding 30 mA.

The connection to the power must meet local and national wiring rules.

All parts must be replaced with original parts supplied by Aquatron Robotic Technology.

Keep out of children's reach.

### 3 YEARS WARRANTY POLICY

In application of the terms of Legislative Royal Decree 1/2007 of 16 November which approved the Revised Text of the Consumer and User Protection Act, BWT offers a three-year product warranty to consumers from the date on which they are delivered by the vendor, subject to the terms and conditions described in this warranty and without prejudice to the terms of the Royal Decree. This warranty will be valid in all Member States of the European Union, subject to the legal limitations in each country where it is enforced, in accordance with the rules for application. The legal warranty covers all components elements and accessories, including power supplies, pumps, motors, electric wires, brushes, belts, handles, wheels, bags, remote controls and other product components.

#### Warranty Conditions:

Products may be covered under the legal and sales warranties as long as the problem is reported by the consumer within two months of becoming aware of it. In order for the warranty to apply, the consumer must contact:

- i) Contact with the Authorized Technical Assistance Service referred in the attached list and they will inform you about the procedure, or
- ii) Call the vendor from whom the product was purchased, who will provide you with further information. Authorized Technical Assistance Service BWT recommends (but does not require) that maintenance and repairs be performed by an Authorized Technical Assistance Service of BWT. If the products are assembled, disassembled, handled and/or repaired by anyone who is not an Authorized Technical Assistance provider, the legal or sales warranties will NOT apply. The warranty will NOT be harmed in cases of DIY repairs as detailed and recommended in the instruction manual. This warranty covers the repair or the return and replacement of the product as mandated by law. All repairs covered under the warranty must be performed by a Technical Assistance Service authorized by BWT. The agents, representatives or distributors, DO NOT have the authority to increase or alter the obligations of the warranty in the name and on behalf of BWT.

#### Exclusions:

Under no circumstances will the legal or sales warranty provided by BWT be applicable when the defect or malfunction of the product is due to :

- i) Unauthorized modifications of the product ;
- ii) Misuse, abuse or negligence ;
- iii) Damages caused by force majeure or fortuitous events;
- iv) Use of salt water levels, higher than 5,000 ppm (0.5%)
- v) The failure to perform the preventive maintenance indicated in the instruction manual;
- vi) Use of the product in anything other than private, residential pools.

Furthermore, BWT will not be liable under any circumstances and neither the legal warranty nor the sales warranty will apply, for any damages that may or will occur to any pool, including pool's plaster or pool's vinyl liner, by reason of the use and/or operation of the BWT pool cleaner.



Control your pool cleaner with  
BWT Best Water Home App



BK0019349/PA

