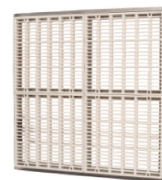


# POOL BASIN FITTINGS - ABS



Ref. Code	Product Description
ASCMD200	8" Main drain with anti entrapment grille – 18 m <sup>3</sup> /h – Concrete pools

Ref. Code	Product Description
ASMD225	Square Main Drain 225x225mm - Frame & Grille in ABS 20 m <sup>3</sup> /h
ASMD300	Square Main Drain 300x300mm - Frame & Grille in ABS 33 m <sup>3</sup> /h
ASMD450SF	Square Main Drain 450x450mm - Frame in SS & Grille in ABS 80 m <sup>3</sup> /h
ASMD600SF	Square Main Drain 600x600mm - Frame in SS & Grille in ABS 132 m <sup>3</sup> /h

## MAIN DRAIN - FOR RESIDENTIAL POOLS

- Manufactured in ABS.
- Main drains available with flat drain grille.
- Recommendation - Main drains must be arranged Properly so that there is no risk of bathers being drawn towards them or trapped there.
- It is recommended that on all installations, a minimum of 2 main drains are installed 2 meters apart.
- 2" Threaded connection.
- Dimension : 8.5 W \* 6.5 H mm

## MAIN DRAIN - FOR COMMERCIAL POOLS

- Manufactured in ABS.
- Main drains available with flat drain grille.
- Recommendation - Main drains must be arranged Properly so that there is no risk of bathers being drawn towards them or trapped there.
- It is recommended that on all installations, a minimum of 2 main drains are installed 2 meters apart.



Ref. Code	Product Description
ASWIT	Adjustable Wall inlet 2" threaded
ASWIS	Adjustable Wall inlet 63mm - Solvent
ASWIS-A	Adjustable Wall inlet 2" - Solvent-ASTM

Ref. Code	Product Description
ASFIT	Adjustable floor inlet Standard 2" Threaded
ASFIS	Adjustable floor inlet Standard 63mm Solvent
ASFIS-A	Adjustable floor inlet Standard 2" Solvent-ASTM
ASFIDT	Adjustable floor inlet Diffuser 2" Threaded
ASFIDS	Adjustable floor inlet Diffuser 63mm Solvent
ASFIDS-A	Adjustable floor inlet Diffuser 2" Solvent-ASTM

## WALL INLETS

- Manufactured in ABS.
- Wall inlet allows easy control of flow into the pool by adjusting the angle of the ball.
- Recommended Flow 5 m<sup>3</sup>/h - 9 m<sup>3</sup>/h.
- Solvent /threaded type.
- Dimension: Ø 105 x 58 H mm

**Note:** Solvent fittings suitable for UPVC 10kg/6kg grey colour pipe/ SCH40 pipe

## FLOOR INLETS

- Manufactured in ABS.
- Adjustable floor inlet allows easy control of flow into the pool by adjusting the screw available.
- Recommended flow 9 m<sup>3</sup> /h - 12 m<sup>3</sup> /h.
- Solvent /threaded type.
- Dimension: Ø 107 x 65 H mm

**Note:** Solvent fittings suitable for UPVC 10kg/6kg grey colour pipe/ SCH40 pipe

# POOL BASIN FITTINGS - ABS



Ref. Code	Product Description
ASVPT	Vacuum point & Plug 2" Threaded
ASVPS	Vacuum point & Plug 63mm Solvent
ASVPS-A	Vacuum point 2" Solvent-ASTM

## VACUUM POINT

- Manufactured in ABS.
- Vacuum point is installed where an automatic pool cleaner or vacuum hose is to be fitted.
- These fittings are supplied with removable plug.
- Solvent / Threaded type.
- Dimension: Ø 105 x 58 H mm

**NOTE:** Solvent fittings suitable for UPVC 10kg/6kg grey colour pipe/ SCH40 pipe



Ref. Code	Product Description
ASWC	Wall conduit for 2" threaded fitting

## WALL CONDUIT

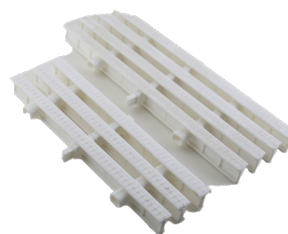
- Manufactured in ABS/PP.
- 300mm Long conduit, can be easily cut to required lengths
- Depending on pool shell thickness, have puddles for positioning within the pool shell.
- Solvent end - Back side to suit pipe of 50mm.
- Threaded end - Front side to suit pools fittings 2"



Ref. Code	Product Description
ASOFF	Gutter drain 50mm

## OVERFLOW FITTING

- Manufactured in ABS
- Suitable for overflow channels required to drain out water to balancing tank.
- Recommended flow 7 m<sup>3</sup>/h.
- Solvent type.
- Dimension: 110 x 97 H mm

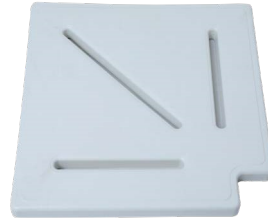


Ref. Code	Product Description
ASOFF250	Overflow gratings 250mm Wide
ASOFF300	Overflow gratings 300mm Wide

## OVERFLOW GRATING

- Manufactured in ABS/PP with UV Protection.
- Comes in 250/300mm Wide.
- Single spine connection.
- Anti slip surface.

# POOL BASIN FITTINGS - ABS



Ref. Code	Product Description
ASCMD150G	Circular Main Drain- Antivortex Frame & Grille in ABS 18 cu mtr/hr
ASCMD150F	Circular Main Drain- Flat Frame & Grille in ABS 18 cu mtr/hr

## MAIN DRAIN GRILLE

- Manufactured in ABS
- Available for Concrete & pre fabricated pools
- Grille cover diameter is 150mm

**NOTE:** White & Half white available | All colours made available against orders | Granite & Marble finish fittings available against orders

Ref. Code	Product Description
ASCG250	Corner gratings 250mm PPG
ASCG300	Corner gratings 300mm PPG

## CORNER GRATING

- This Corner Grating is used to ensure pool corners finished safely matching over flow gratings.
- 90° overflow corner gratings made in PP, matching grating colour of half white.
- This comes with non slip finish.



Ref. Code	Product Description
ASGP	Grating Profile - 1.5 metre Long

## OVERFLOW GRATING PROFILE

- This Profile is used to ensure the grating is inline with deck area.
- Suitable for 22, 24, and 35 mm high gratings.
- Made in PP.
- Supplied in 1.5 mtr lengths.