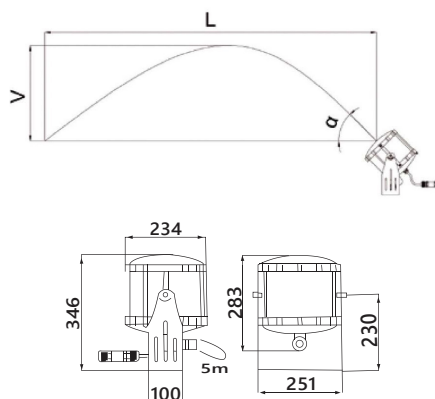


# FOUNTAIN NOZZLES



Dimensions (in mm)



## COMPACT RAINBOW JET

The COMPACT RAINBOW JET is a nozzle that develops an illuminated laminar water jet, giving the water a unique aspect, producing a striking visual aspect for the viewer. In its compact design we have incorporated a high power RGBW LED that dramatically illuminates the water parabola in its entirety.

Due to its compact design and small dimensions, it is easy to use in any installation that combined with its low splash and low level of noise, makes it ideal for small gardens, and a complementary element of any source.

## TECHNICAL SPECIFICATION

\* Rainbow Jet use is recommended with low environmental light.  
Maximun 180 lx

Lights used: 18W/12V RGB

Dimensions								Performance				
Ref.Code	Connection	Outlet	Weight	Power	Voltage	Elec. Connection	Jet angle	Horizontal range	1	2	3	4
	BSP-NPT	(mm)	(kg)				α	(m) L				
ASLJ	G1" F/H(*)	Ø14	17,0	10W	24V DC	0,5m cable with IP68 connector	30°	l/min	18,00	25,00	30,00	34,00
								m.c.a*	0,90	1,60	2,40	3,00
								Height (m) V	0,19	0,32	0,47	0,56
							45°	l/min	17,20	23,50	30,00	35,00
								m.c.a*	0,90	1,50	2,20	2,80
								Height (m) V	0,33	0,54	0,80	1,06
							60°	l/min	19,00	26,00	32,00	36,60
								m.c.a*	1,00	1,80	2,40	3,20
								Height (m) V	0,53	0,97	1,38	1,83
							75°	l/min	24,40	35,50		
								m.c.a*	1,60	3,00		
								Height (m) V	1,10	2,00		

\*m.c.a - meters water column.

Noise: ●●●●● Visibility: ●●●●● Splash/Mist: ●●●●● Wind Appearance: ●●●●● Wind Resistance: ●●●●●